

# GH1230/GH1236 ACCESSORIES

## Multipoint live centre set

Item No. 9527 3MT



## Machine mount

- Stud size 80 x 10mm
- Foot diameter 75mm
- Loading 250kg
- Adjustment travel 8mm
- 8 required



Item No. 7999

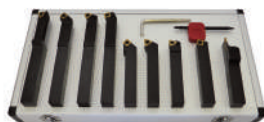
## Indexable lathe tools

- 16mm 5 piece set  
Item No. 8913



- Set tips  
Item No. 8913A

- 16mm 9 piece set  
Including: turning, threading external/internal, parting off, facing  
Item No. 9117



- Set tips  
Item No. 9117A

Many more lathe tools on pages 121-123

## TCT lathe tool set

- 12mm 11 piece  
Item No. 9097



## Drill chucks

### KEYED

B16 1-13mm Item No. 8140  
B16 3-16mm Item No. 8141

### KEYLESS

B16 1-13mm Item No. 8129  
B16 3-16mm Item No. 8148



## Arbor

Item No. 8148A 3MT



## Quick change toolpost

- Superb quality tool
- Capacity 16mm
- Hardened and ground surface to close tolerances
- Supplied with two standard holders, vee holder, parting off holder with blade  
Item No. 8928

Additional standard holder Item No. 8928A

Part off blade Item No. 8928E

Adaptor nut to fit toolpost Item No. 8928B



## Centre drill set

- 3.15 5 6.2 8 10mm  
Item No. 9053MET



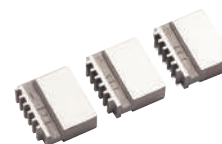
## Tailstock die holder

- Quad head  
Item No. 4273 Imperial  
Item No. 4273M Metric  
Full details on page 129



## Set 3 soft jaws

Item No. 9158



## ER32 Lathe collet chuck



Item No. 3019  
Boxed set 18  
collets 3mm  
to 20mm

- Low cost accurate system
- Hardened and ground
- Collet capacity 3mm to 20mm
- Bar stock will pass through collet and chuck

Item No. 8010 150mm  
To fit an ER32 chuck add 150mm backplate. Machined to fit lathe spindle. Unmachined on face Item No. 9747

Individual collets  
Item No. Capacity

3019	3-2
3019	4-3
3019	5-4
3019	6-5
3019	7-6
3019	8-7
3019	9-8
3019	10-9
3019	11-10
3019	12-11
3019	13-12
3019	14-13
3019	15-14
3019	16-15
3019	17-16
3019	18-17
3019	19-18
3019	20-19

## 5C Precision collet chuck

- 130mm diameter
- Direct fitting
- Scroll mechanism, key operated
- Accepts 5C collets, available metric 2mm-28mm x 1mm or imperial 1/16" - 1/32" x 1/32"

Item No. 9029D1-4

See page 137 for collet selection



## Cutting oil

- Neatcut
- A high performance neat cutting oil
- Laboratory formulated and tested to provide advanced performance
- Clean, stain resistant application
- Lathe capacity 7.4 litres  
4 litres - Item No. 8885



## Live centre

Item No. 8005 3MT

